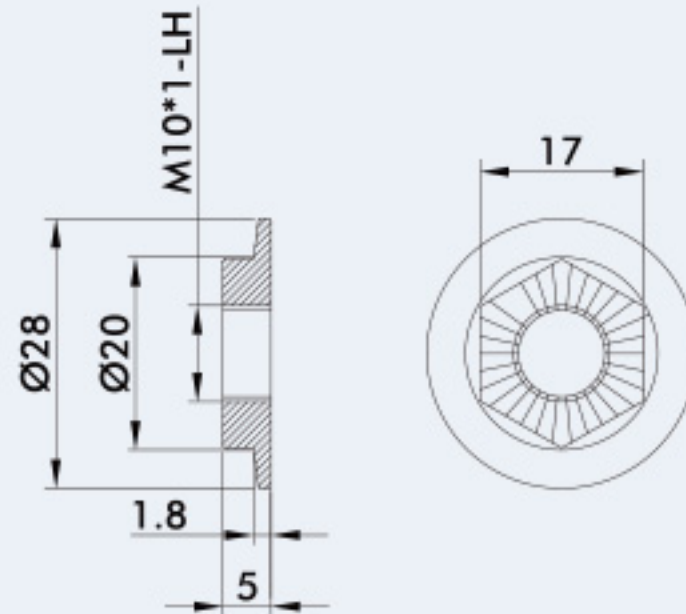
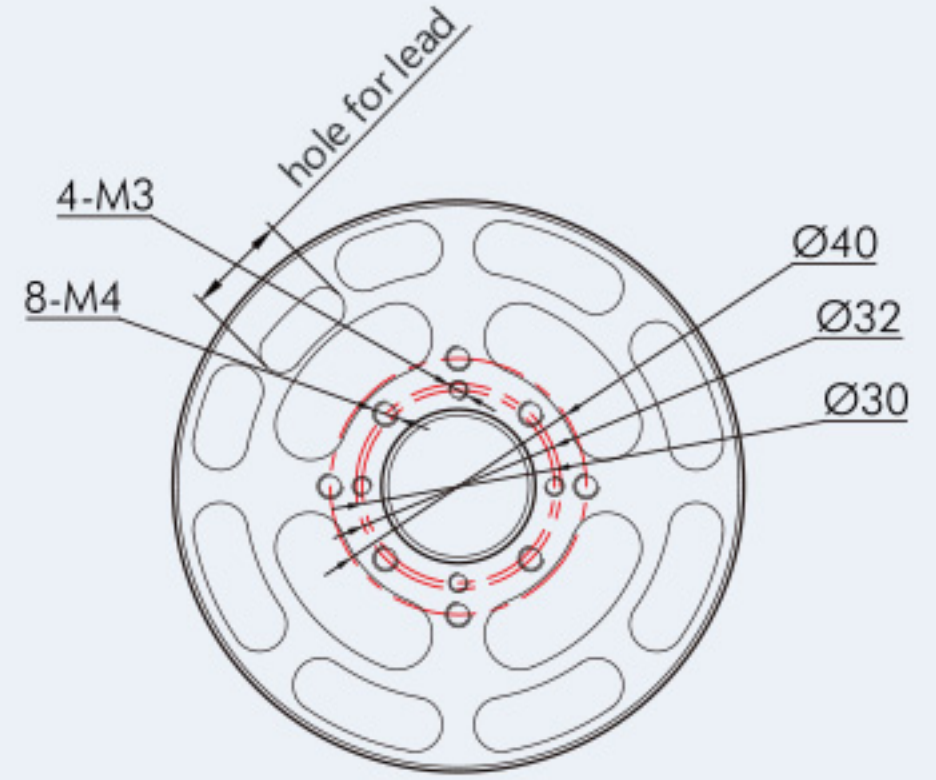
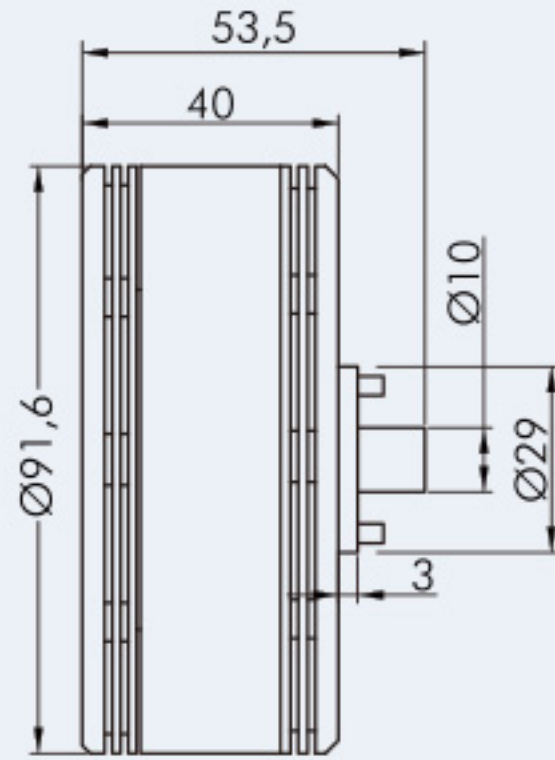
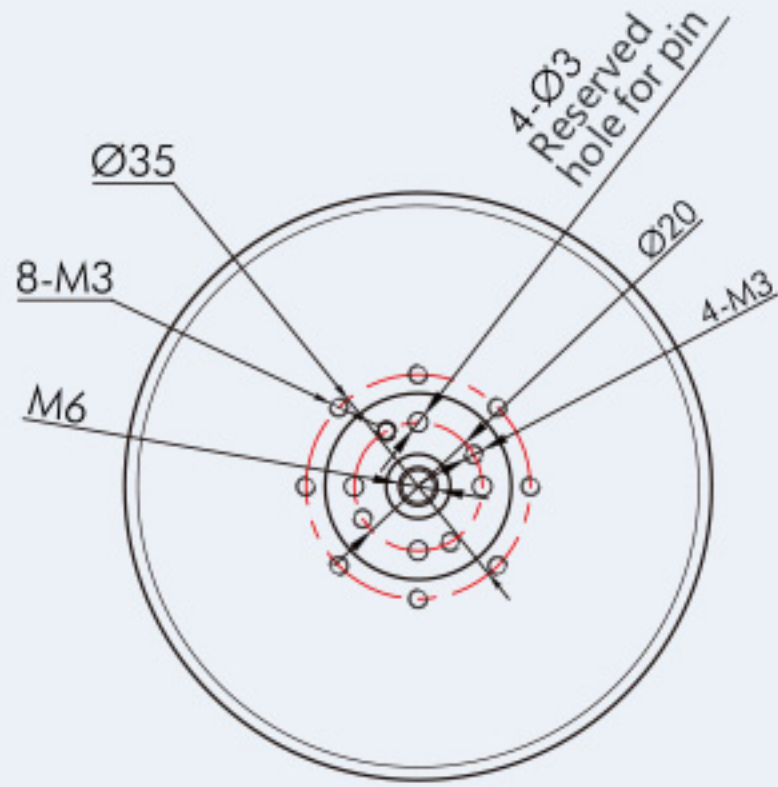


Product Drawing



Specifications

Test Item	KV100	Weight (Incl. Cable)	649g
Motor Dimensions	Φ91.6*43mm	Internal Resistance	45-51mΩ
Lead	14AWG Silicone wire	Configuration	36N42P
Shaft Diameter	15mm	Rated Voltage(Lipo)	6-12S
Idle Current(10V)	1.6A	Peak Current(180s)	60A
Max. Power(180s)	2700W	Recommendation	/

Test Item	KV120	Weight (Incl. Cable)	649g
Motor Dimensions	Φ91.6*43mm	Internal Resistance	36-41mΩ
Lead	14AWG Silicone wire	Configuration	36N42P
Shaft Diameter	15mm	Rated Voltage(Lipo)	6-12S
Idle Current(10V)	≤2.0A	Peak Current(180s)	70A
Max. Power(180s)	3600W	Recommendation	/

Test Report

Type	Propeller	Throttle	Voltage (V)	Thrust (g)	Torque (N*m)	Current (A)	RPM	Power (W)	Efficiency (g/W)	Operating Temperature (°C)
	T-MOTOR G30*10.5 " CF	40%	47.91	2850	0.97	4.97	1719	238	11.96	/
		42%	47.90	3108	1.06	5.54	1783	265	11.72	
		44%	47.88	3331	1.13	6.07	1849	291	11.46	
		46%	47.87	3571	1.22	6.65	1913	318	11.23	
		48%	47.87	3859	1.30	7.29	1981	349	11.06	
		50%	47.85	4114	1.39	7.99	2040	382	10.77	
		52%	47.84	4439	1.50	8.80	2125	421	10.54	
		54%	47.81	4748	1.61	9.80	2204	468	10.14	
		56%	47.79	5143	1.75	10.89	2292	520	9.88	
		58%	47.76	5515	1.88	12.20	2386	582	9.47	
		60%	47.75	5886	1.99	13.11	2459	626	9.41	
		62%	47.72	6306	2.14	14.39	2531	687	9.18	
		64%	47.71	6649	2.25	15.56	2610	742	8.96	
		66%	47.67	7061	2.39	17.00	2683	810	8.72	
		68%	47.66	7434	2.51	18.22	2755	868	8.56	
		70%	47.62	7886	2.67	20.15	2836	960	8.22	
		76%	47.54	9074	3.07	24.34	3030	1157	7.84	
		82%	47.45	10215	3.45	29.34	3223	1392	7.34	
		88%	47.36	11500	3.88	34.75	3397	1646	6.99	
		94%	47.26	12603	4.28	40.33	3569	1906	6.61	
	100%	47.15	14011	4.78	46.99	3747	2215	6.33		

P80 III Dip	T-MOTOR MF3016	40%	47.89	3050	1.09	5.32	1712	255	11.97	/
		42%	47.88	3296	1.18	5.90	1769	282	11.67	
		44%	47.87	3508	1.25	6.52	1830	312	11.24	
		46%	47.86	3729	1.33	7.10	1893	340	10.97	
		48%	47.85	4020	1.42	7.72	1961	369	10.88	
		50%	47.84	4278	1.52	8.46	2024	405	10.57	
		52%	47.82	4616	1.65	9.41	2104	450	10.26	
		54%	47.80	4902	1.75	10.33	2176	494	9.93	
		56%	47.78	5361	1.91	11.58	2271	553	9.69	
		58%	47.76	5729	2.04	12.68	2345	606	9.46	
		60%	47.73	6189	2.19	14.14	2434	675	9.17	
		62%	47.71	6526	2.31	15.38	2506	734	8.90	
		64%	47.68	6969	2.47	16.86	2580	804	8.67	
		66%	47.65	7363	2.61	18.14	2650	864	8.52	
		68%	47.63	7719	2.73	19.50	2719	929	8.31	
		70%	47.60	8132	2.88	21.10	2782	1004	8.10	
		76%	47.51	9395	3.34	26.16	2987	1243	7.56	
		82%	47.41	10618	3.78	31.59	3174	1498	7.09	
		88%	47.32	11833	4.22	37.16	3350	1758	6.73	
		94%	47.21	13009	4.64	43.34	3515	2046	6.36	
100%	47.09	14371	5.13	50.42	3686	2374	6.05			

FIII KV100	T-MOTOR G32*11" CF	40%	47.89	3569	1.30	6.23	1682	298	11.97	/
		42%	47.88	3833	1.40	6.84	1744	327	11.72	
		44%	47.86	4074	1.48	7.57	1804	362	11.25	
		46%	47.86	4329	1.57	8.08	1848	387	11.19	
		48%	47.83	4655	1.69	9.00	1915	431	10.81	
		50%	47.82	4992	1.80	9.89	1982	473	10.56	
		52%	47.81	5325	1.92	10.76	2054	514	10.36	
		54%	47.77	5655	2.05	11.96	2121	571	9.90	
		56%	47.76	6143	2.22	13.22	2206	631	9.73	
		58%	47.73	6604	2.39	14.61	2289	697	9.47	
		60%	47.69	7188	2.59	16.52	2374	788	9.13	
		62%	47.67	7609	2.75	17.83	2438	850	8.95	
		64%	47.64	7997	2.90	19.37	2506	923	8.67	
		66%	47.62	8413	3.04	20.83	2577	992	8.48	
		68%	47.59	8783	3.18	22.42	2646	1067	8.23	
		70%	47.55	9372	3.38	24.31	2707	1156	8.11	
		76%	47.45	10840	3.92	30.37	2905	1441	7.52	
		82%	47.34	12181	4.43	36.47	3078	1726	7.06	
		88%	47.23	13512	4.94	43.11	3237	2036	6.64	
		94%	47.10	14961	5.48	50.65	3393	2385	6.27	
100%	46.96	16344	5.98	58.51	3545	2748	5.95			

T-MOTOR MF3218	40%	47.87	3505	1.30	6.23	1684	298	11.75	/
	42%	47.87	3744	1.39	6.71	1739	321	11.66	
	44%	47.85	3992	1.47	7.43	1798	356	11.23	
	46%	47.83	4267	1.58	8.20	1856	392	10.88	
	48%	47.82	4565	1.68	8.98	1920	429	10.63	
	50%	47.80	4885	1.79	9.75	1981	466	10.48	
	52%	47.77	5248	1.93	11.00	2056	525	9.99	
	54%	47.76	5592	2.06	11.93	2125	570	9.82	
	56%	47.74	6039	2.23	13.24	2214	632	9.56	
	58%	47.72	6510	2.39	14.65	2295	699	9.31	
	60%	47.68	7018	2.57	16.30	2376	777	9.03	
	62%	47.65	7408	2.71	17.70	2446	843	8.78	
	64%	47.63	7803	2.87	19.12	2512	911	8.57	
	66%	47.61	8227	3.02	20.56	2583	979	8.41	
	68%	47.57	8732	3.20	22.39	2646	1065	8.20	
	70%	47.54	9167	3.36	24.10	2713	1146	8.00	
	76%	47.44	10531	3.87	29.81	2913	1414	7.45	
	82%	47.33	11825	4.37	35.92	3087	1700	6.95	
	88%	47.23	13079	4.83	42.10	3256	1988	6.58	
	94%	47.10	14412	5.30	49.09	3418	2312	6.23	
100%	46.97	15849	5.83	56.87	3567	2671	5.93		

Note: Motor temperature is motor surface temperature @100% throttle running 10mins.

(Data above based on benchtest are for reference only, comparison with that of other motor types is not recommended.)

Type	Propeller	Throttle	Voltage (V)	Thrust (g)	Torque (N*m)	Current (A)	RPM	Power (W)	Efficiency (g/W)	Operating Temperature (°C)
	T-MOTOR G30*10.5 " CF	40%	47.86	3819	1.29	7.55	1984	361	10.57	/
		42%	47.84	4145	1.40	8.39	2055	401	10.33	
		44%	47.83	4433	1.49	9.14	2141	437	10.15	
		46%	47.79	5135	1.73	11.09	2289	530	9.68	
		48%	47.76	5719	1.94	12.95	2416	618	9.25	
		50%	47.73	6157	2.08	14.35	2503	685	8.99	
		52%	47.71	6592	2.22	15.63	2589	746	8.84	
		54%	47.68	7019	2.38	17.19	2673	820	8.56	
		56%	47.65	7493	2.53	18.84	2755	898	8.34	
		58%	47.61	8114	2.74	21.11	2860	1005	8.08	
		60%	47.58	8578	2.90	22.89	2933	1089	7.88	
		62%	47.55	8983	3.04	24.52	3003	1166	7.71	
		64%	47.52	9388	3.17	26.22	3070	1246	7.53	
		66%	47.48	9842	3.35	28.33	3145	1345	7.32	
		68%	47.45	10262	3.47	30.19	3222	1432	7.16	
		70%	47.41	10784	3.66	32.47	3289	1540	7.00	
		76%	47.28	12346	4.19	39.73	3488	1878	6.57	
		82%	47.16	13689	4.68	47.11	3679	2222	6.16	
		88%	47.02	15158	5.17	54.95	3855	2583	5.87	
		94%	46.84	16739	5.73	64.69	4037	3030	5.52	
	100%	46.66	18256	6.28	74.97	4209	3498	5.22		

P80 III Pin KV120	T-MOTOR MF3016	40%	47.85	4027	1.44	8.14	1964	390	10.33	/
		42%	47.84	4322	1.54	8.91	2034	426	10.14	
		44%	47.82	4608	1.64	9.81	2103	469	9.82	
		46%	47.80	5009	1.79	11.07	2197	529	9.47	
		48%	47.76	5603	1.99	12.85	2318	614	9.13	
		50%	47.72	6395	2.28	15.37	2473	733	8.72	
		52%	47.69	6805	2.42	16.80	2553	801	8.50	
		54%	47.66	7239	2.57	18.34	2637	874	8.28	
		56%	47.63	7702	2.73	20.06	2715	955	8.06	
		58%	47.60	8219	2.92	21.98	2796	1046	7.86	
		60%	47.56	8708	3.10	24.13	2886	1148	7.59	
		62%	47.53	9147	3.25	25.84	2951	1228	7.45	
		64%	47.49	9526	3.39	27.85	3029	1323	7.20	
		66%	47.45	10077	3.59	30.04	3102	1425	7.07	
		68%	47.41	10495	3.74	32.12	3174	1523	6.89	
		70%	47.37	11049	3.93	34.54	3239	1636	6.75	
		76%	47.25	12441	4.44	41.62	3442	1966	6.33	
		82%	47.11	13813	4.96	49.58	3623	2335	5.91	
		88%	46.97	15149	5.43	57.50	3798	2701	5.61	
		94%	46.80	16817	5.98	67.17	3979	3143	5.35	
100%	46.61	18291	6.54	77.84	4142	3628	5.04			

T-MOTOR G29*9.5" CF	40%	47.88	3371	1.10	6.60	2020	316	10.67	/
	42%	47.86	3643	1.19	7.32	2097	351	10.39	
	44%	47.84	3974	1.30	8.30	2199	397	10.01	
	46%	47.81	4498	1.47	9.72	2332	465	9.68	
	48%	47.79	4931	1.61	10.90	2442	521	9.47	
	50%	47.78	5338	1.74	12.00	2529	573	9.31	
	52%	47.74	5850	1.91	13.90	2657	664	8.82	
	54%	47.72	6290	2.05	15.25	2755	728	8.64	
	56%	47.68	6778	2.21	17.07	2854	814	8.33	
	58%	47.66	7230	2.35	18.52	2936	883	8.19	
	60%	47.63	7608	2.47	19.97	3012	951	8.00	
	62%	47.60	7960	2.59	21.38	3079	1018	7.82	
	64%	47.58	8330	2.72	22.86	3149	1088	7.66	
	66%	47.55	8737	2.84	24.55	3228	1167	7.49	
	68%	47.52	9214	2.99	26.37	3306	1253	7.35	
	70%	47.48	9632	3.14	28.43	3381	1350	7.14	
	76%	47.38	10865	3.53	33.93	3594	1608	6.76	
	82%	47.26	12235	3.99	40.64	3792	1921	6.37	
	88%	47.13	13656	4.47	48.19	3995	2272	6.01	
	94%	46.99	15086	4.93	56.17	4185	2640	5.72	
100%	46.82	16504	5.42	65.18	4371	3052	5.41		

Note: Motor temperature is motor surface temperature @100% throttle running 10mins.

(Date above based on benchtest are for reference only, comparion with that of other motor types is not recommended.)

Contents



Motor × 1
(KV100/120)

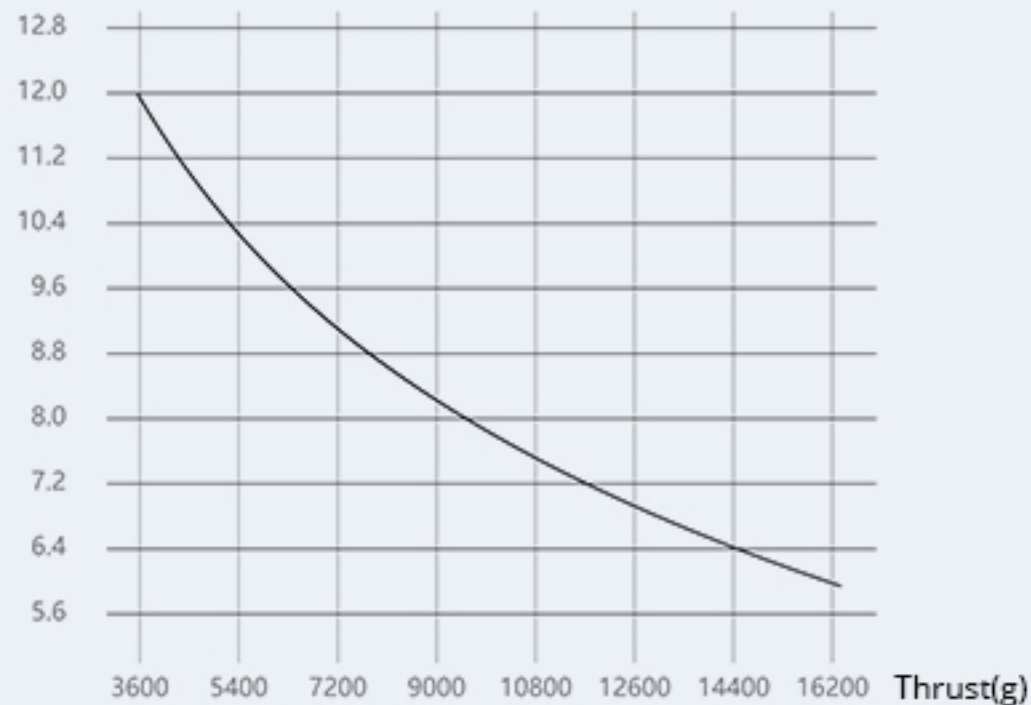


Parts Bag × 1
(ϕ 32*10*5mm Carbon prop cover*1,
M6*11.5mm Interlocking screw*1)

Please check that your package contains all the above items before use, If something is missing, please contact online customer service or leave message to onlinesales@rctigermotor.com

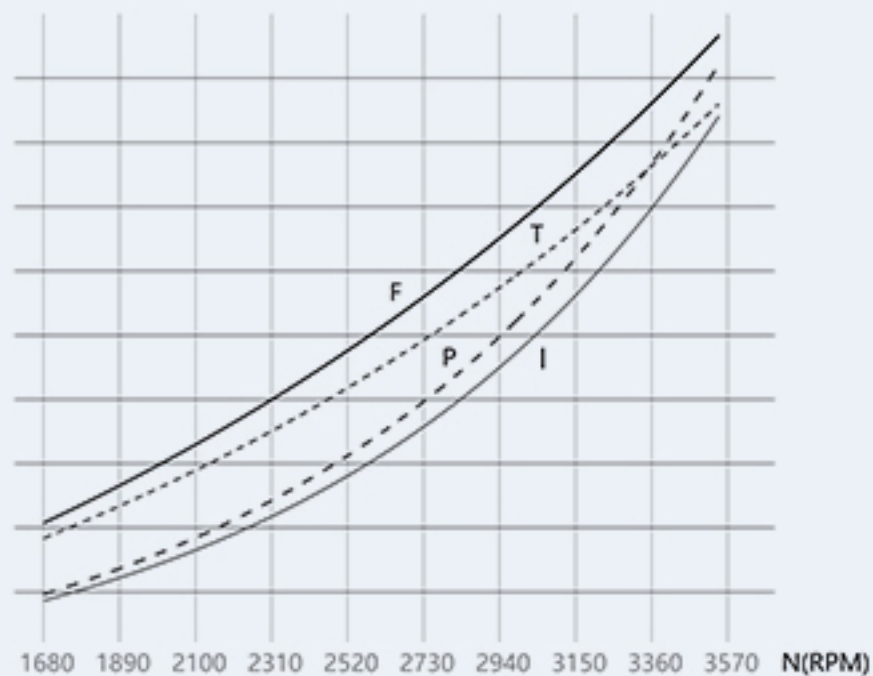
Analytical Graph of Motor Operation

Efficiency(g/W)



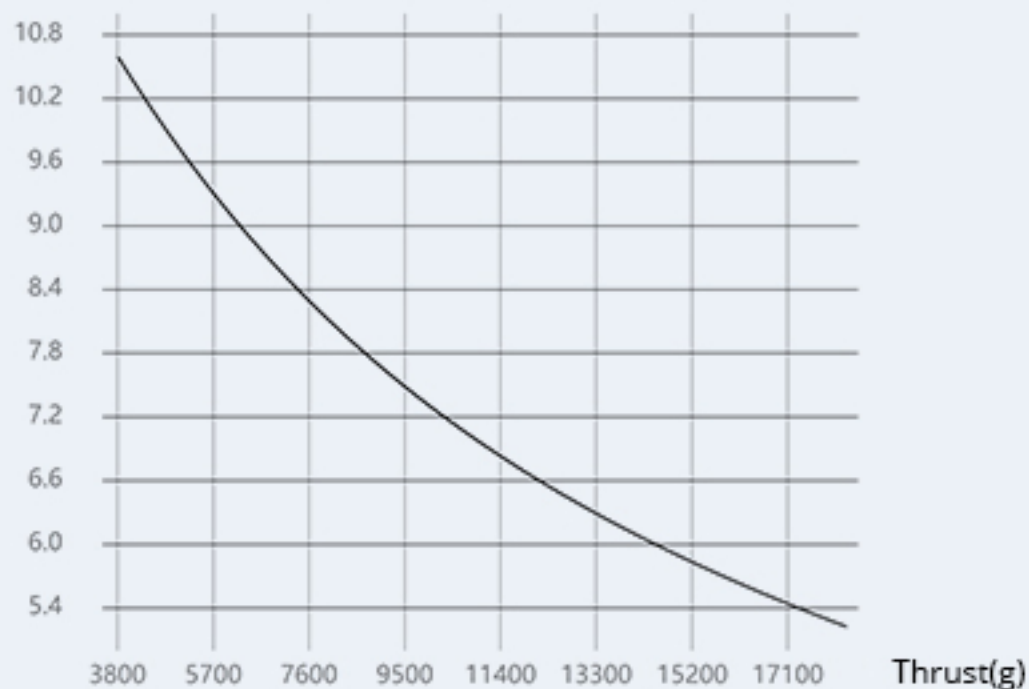
F (g)	T (N·m)	P (W)	I (A)
17000	7.0	3000	70
15300	6.3	2700	63
13600	5.6	2400	56
11900	4.9	2100	49
10200	4.2	1800	42
8500	3.5	1500	35
6800	2.8	1200	28
5100	2.1	900	21
3400	1.4	600	14
1700	0.7	300	7
0	0.0	0	0

P80III -KV100.G32×11.12S(48V)



Efficiency Graph

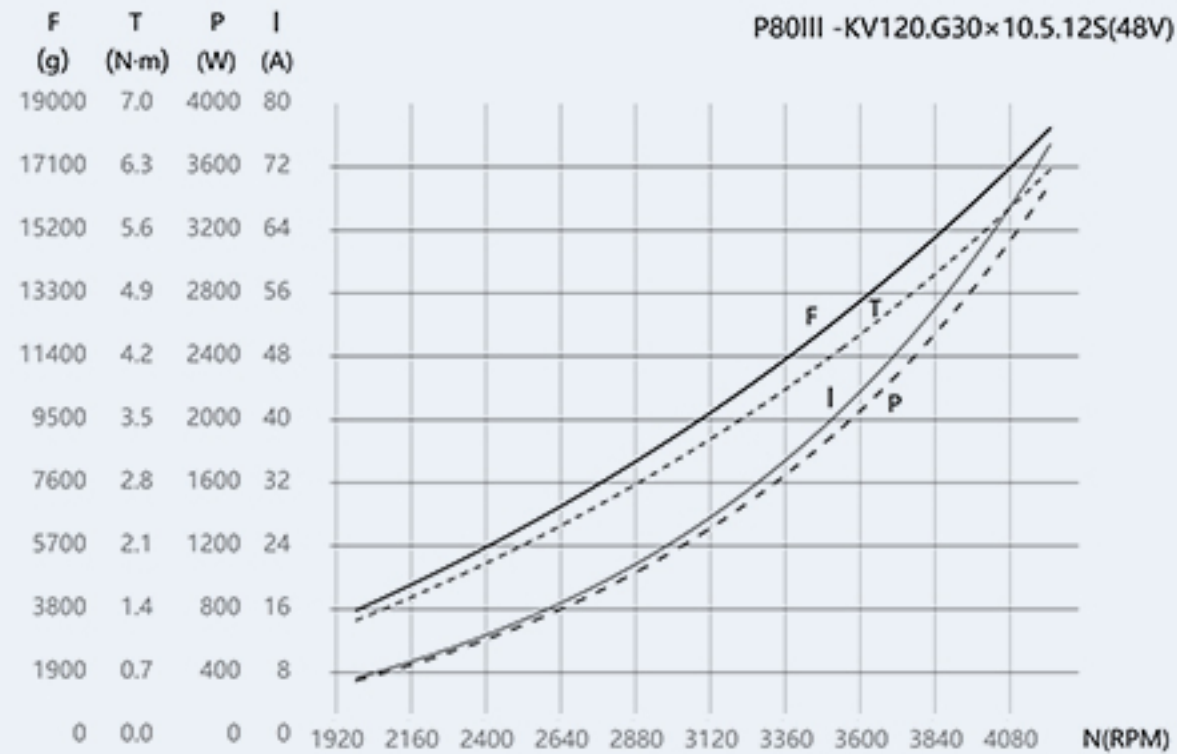
Efficiency(g/W)



Efficiency Graph

Thrust,Torque,Power,Current&RPM Graph

F-Thrust,T-Torque,P-Power,I-Current,N-RPM



Thrust,Torque,Power,Current&RPM Graph

F-Thrust,T-Torque,P-Power,I-Current,N-RPM